

LogDepot SOLO BROADCAST

Professional Broadcast Recording
The best solution: easy, efficient and affordable



LogDepot SOLO:

Easy and affordable, 24/7 Broadcast Recording and Monitoring

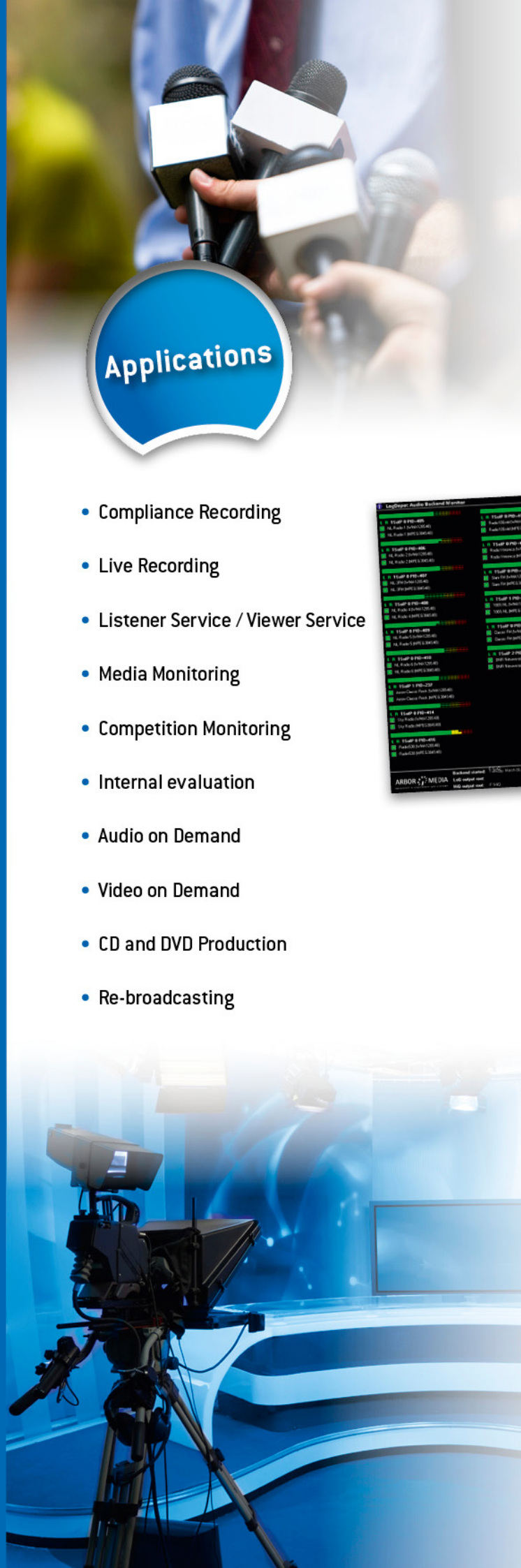
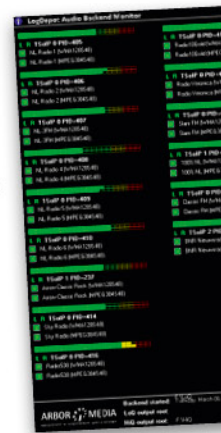
LogDepot SOLO is a single system for recording, monitoring, archiving, retrieving and publishing audio and video. Highly cost-effective yet sophisticated, easy-to-use and especially adapted for e.g. compliance recording, broadcast monitoring and live recording. LogDepot SOLO is installed on a dedicated PC. With the help of the web-based graphical interface users can simply click on the URL's and start using the system.

LogDepot SOLO's highlights:

- Full automatic 24/7 recording
- Easy-to-use
- Web-based, no user licenses
- Dual quality recording: proxy (WM) and HiQ (MPEG2 or H.264/AAC)
- EPG and As Run metadata integrated
- FIFO
- Instant browse and export (while recording)
- Single and multichannel, in one box
- Export in MXF, MP3, ASF
- SNMP and email alert
- Scalable
- Add and modify metadata

Applications

- Compliance Recording
- Live Recording
- Listener Service / Viewer Service
- Media Monitoring
- Competition Monitoring
- Internal evaluation
- Audio on Demand
- Video on Demand
- CD and DVD Production
- Re-broadcasting



LogDepot SOLO: Professional 24/7 recording and more

Record

Browse

Export



Recording

Multichannel recording can be based on different sources and input formats. Two qualities are recorded simultaneously in bitrates varying from 250 kb/s to 25 Mb/s (video) and from 8 kb/s to 1.5 Mb/s (radio). The system can automatically capture Electronic Program Guide (EPG) or As Run data. For larger storage capacity needs an external storage system is available. The FIFO principle applies to the buffer capacity.

Browsing

The [LogDepot Web client](#) - a web-based client application - is extremely easy to use; dedicated software on the client PC's is not needed. Users can simply enter the URL and start using the system. All standard functionalities such as browse for video content, search, visualize and export video fragments are available from the web client. The system offers a thumbnail overview window and easy navigation by e.g. program title, date/time, etc. Audio only and video versions available.

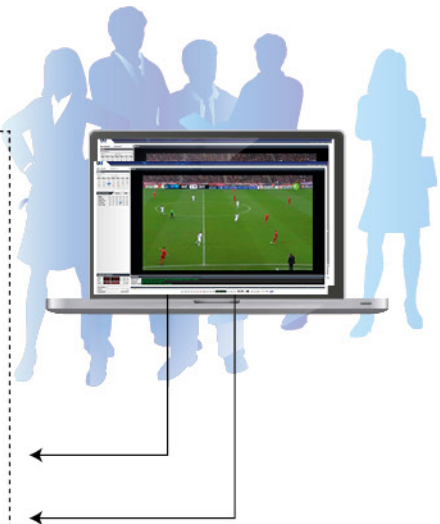
Exporting

LogDepot Solo has an easy export function for (automated and/or manually) re-broadcasting, internal use, internet publishing, Video on Demand (VOD) and/or archiving. MXF support facilitates easy interfacing with third party systems. Integration with CD/DVD Robot available. Native recording is possible in WMA/WMV, MPEG1/2, H.264/AAC and linear PCM and exports are available to [Media Board](#), MXF, MP3, CD/DVD robot, website and archiving system.

RECORD



BROWSE



EXPORT



Customers

TV2 Denmark

Danish Broadcast Cooperation DR

RUV Iceland Radio and TV

Landesanstalt für Privaten Rundfunk

(LPR) Hessen

SRG SSR Idée Suisse

Landesanstalt für Medien Nordrhein

Westfalen

Dutch Media Authorities

BBC Monitoring

Agence France-Presse

Hessischer Rundfunk

ParkPost

SBS Radio

Radio Suisse Romande

VRT

Schweizer Radio DRS

Technicolor

Reporter Service

L1 Radio en TV

Flemish Media Company

Südwestrundfunk

Talpa

Dutch National Parliament

LogDepot SOLO and Arbor Media

LogDepot SOLO is an Arbor Media product. Arbor Media specializes in digitally capturing, monitoring, retrieving and publishing audio and video for conference and broadcast purposes. Since its start Arbor Media has built up a strong reputation, based on state-of-the-art technology and dedicated after sales service. The company can boast of a large installed customer base across Europe and elsewhere.

Hogeweide 3

7005 AV Doetinchem, The Netherlands

Phone: +31 314 399 055

info@arbormedia.nl

